

Come and See...



...our display on Ellis Wellwood Sifton VC the only Elgin County resident to be awarded the Victoria Cross.

...our Hall of Honour showcases the medals awarded to veterans and now entrusted to the museum to preserve for future generations.



...our files on over 9,000 individuals, who have served in times of peace and war.

...and much more

DIRECTIONS...

Enter the complex off of Pleasant Street.
...from **Port Stanley** turn left onto Talbot Street at the lights under the railway trestle.

...from **London** follow Wellington Road to St. Thomas and follow road as it turns and goes under the railway trestle. Turn left at traffic light under railway trestle onto Talbot Street.

...from **Aylmer** travel through St. Thomas on Talbot Street till last left at Stanley Street. Make a very quick right onto Old Talbot Street.

...from **Talbotville** follow Sunset Road toward Port Stanley and turn left at traffic light under railway trestle.

...from **Hwy 401** turn off south at Wellington Road Exit 183 and follow London directions



ADMISSION

Adults \$4.00
Children \$1.00



Your admission covers both the **Elgin Military Museum** and the **Duncombe House Heritage Centre**

MUSEUM HOURS

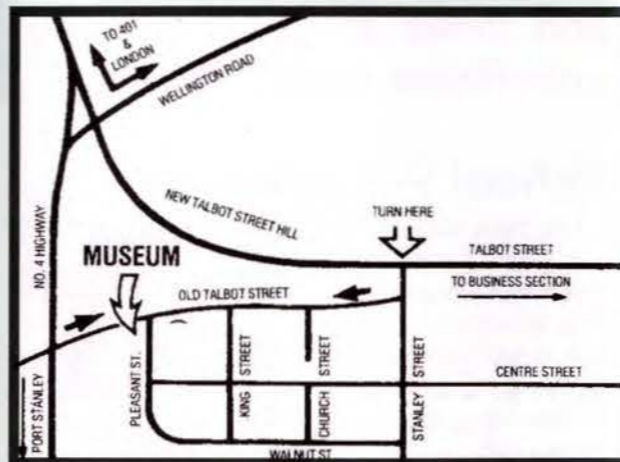
Tuesday - Friday 1 p.m. to 5 p.m.
Saturday 9 a.m. to noon & 1 p.m. to 5 p.m.
Sunday April to Sept. ONLY 2 p.m. to 5 p.m.

Closed Mondays

Please make arrangements for Group and School visits in advance.

Visit our Web Site

Web: www.execulink.com/~emm
Email us at: emm@execulink.com



The Elgin Military Museum and the
Duncombe House Heritage Centre
30 Talbot St. St. Thomas, Ontario N5P 1A3
519-633-7641

THE ELGIN MILITARY MUSEUM



St. Thomas Ontario



and the

Duncombe House
Heritage Centre



The Purpose...

...of the Elgin Military Museum is to collect, preserve, identify and exhibit momentos of Canadian military history, with an emphasis on Elgin County and its residents. Most material is Canadian, but some is from other countries whose military history has been linked at some time to this country's. Many of the most treasured items in our collection have been gifts from private individuals.



The Reason...

... Since the landing of Colonel Thomas Talbot at Port Talbot in 1803, there have been few families who, at one time or another, have not had a father, son, or daughter serving in the armed forces of Canada. Our area has a most enviable history in the defense of Canada and our Canadian way of life, both within our country and abroad. Many



battle honours and awards, including a Victoria Cross have been awarded to the gallant men and women of Elgin, for service in the War of 1812, 1837 Rebellion, Fenian Raids, Riel Rebellion, Boer War, World War I, World War II, Korea and Peace Keeping Missions. More recently they have seen action in Afghanistan.



The Museum...

... is located in the west end of St. Thomas, overlooking Kettle Creek. All exhibits are on one floor for easy access and are designed to allow visitors to move through at their own pace. We are proud of our knowledgeable staff and volunteers and they are available to answer any questions.



It is the intention of the Museum to preserve the background and history of our Elgin military ancestors, so that the youth of today and tomorrow may understand something of the life and times of those who so unselfishly fought for us.

School Workshops...

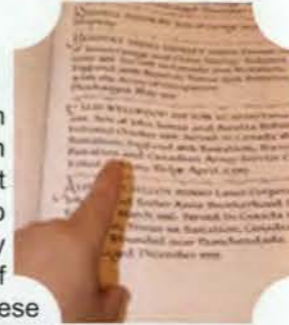
...The Elgin Military Museum has produced some workshops suitable for school groups. For more information on these workshops or to book a group tour please call

519-633-7641.



Research...

...Since the Museum opened to the public in 1982, a continuing project has been to develop records on the military efforts of the people of Elgin County. Today, these records now consist of over 9,000 individual files, and are often used by people conducting research into military history or searching family genealogies. We also house a vast reference library of thousands of military books and other research materials.



Veteran Interviews...

...have been conducted by the Museum for years now. Many interviews are recorded on video where veterans describe their experiences and memories of their military life from World War I to Afghanistan. As many of the veterans have now "faded away" these video tapes present an opportunity to learn of a veteran's experiences in their own words.



More than a Regimental Museum...

...While the Museum has many artifacts and other resources of the Elgin Regiment (31 CER), we have a wider collection covering the efforts of Elgin County residents involved with the Army, Navy, Air Force, and the home front.



Duncombe House Heritage Centre...

...New in 2008 is the Centre. Located in the adjoining building but all under the same roof the Centre is growing and taking shape. Not just an addition to the Elgin Military Museum it has provided space for rotating displays, the new Jumbo Museum Exhibit and other new displays dealing with local heritage.



Did you Serve...

...if you have a connection to Elgin County and have done military service we want to hear from you to add you to our files of those who have served. Any information is appreciated.

Just a short walk from Jumbo the Elephant...

... See our new exhibit on JUMBO. A larger than life statue of Jumbo, the famous circus elephant, was erected in 1985 by the citizens of St. Thomas in tribute to his death in St. Thomas 100 years before.



100% Recyclable

Please Recycle

100% Recyclable

Wallacetown W.I. meets at the station

Oct 30th 2008 *Chronicle*

-By Kathy Minnema

The Wallacetown W.I. met at the south Dunwich Community Hall in Wallacetown and carpooled to St. Thomas to tour the Elgin County Railway Museum for our October meeting. There were seven members and four men in attendance. Convener Sally McIntyre introduced us to our tour guide Grant Hughson, the Fundraising Chair person of the North American Railway Hall of Fame.

St. Thomas was known as the railway capital of Canada and dates back to 1856 when the London and Port Stanley Railway was completed.

It was the 2nd largest station in Canada and the halfway point between New York and Chicago with 120 trains passing through the town. The Trans-Canada limited was the fastest train in Canada to use these tracks. They employed up to 30,000 workers.

The Superintendent Office was at the southwest corner of the station on the second floor where he could see how everything was going at any point of the day. If there were any problems, this is where it was reported and all problems would be dealt with. The mailroom had the main clock to which every watch was set. All employees received their pay in cash on a set day and time.

The restoration of this building has been done through fundraising and grants from

the government and by dedicated volunteers who put hours of their time and expertise into the marketing. Programs like 400,000 bricks to be sold, 162 windows replaced, cash donations, and group tours all help with the cause.

Sally thanked Grant for our tour and presented him with a donation. Then we went to Arthur Voaden Secondary School for a three-course meal put on by the student entrepreneurial program under the leadership of Mike Flynn.

The meeting was opened by President Helen Van Brenk. The roll call: When was your first train ride and where to? Many traveled from the age of 4 years to 16 years for the first time. Meeting reports were given. The upcoming London area Conservation held at the Keystone Complex in Shedden was discussed and arrangements made for rides and the program were made.

Wallacetown W.I. are responsible for two light and lively sessions which, with the help of members, was organized by Kathy Minnema. Darlene Ford announced a Mystery Tour bus trip planned for Nov. 27. The meeting was adjourned.

Next meeting: Thursday Nov. 6 at 1:00 p.m. Meet at the South Dunwich Community Hall. Tour the Elgin County Museum "Pinecroft Display" and lunch at the Talbot trail. Men are welcome.



CANADA SOUTHERN

RAILWAY STATION

ST. THOMAS • ONTARIO • CANADA

OUR STATION

OUR HERITAGE

OUR FUTURE

Darlene Ford,

Joan M'Landress, Louie Lackey, Kathy Minnema,



01/10/2008

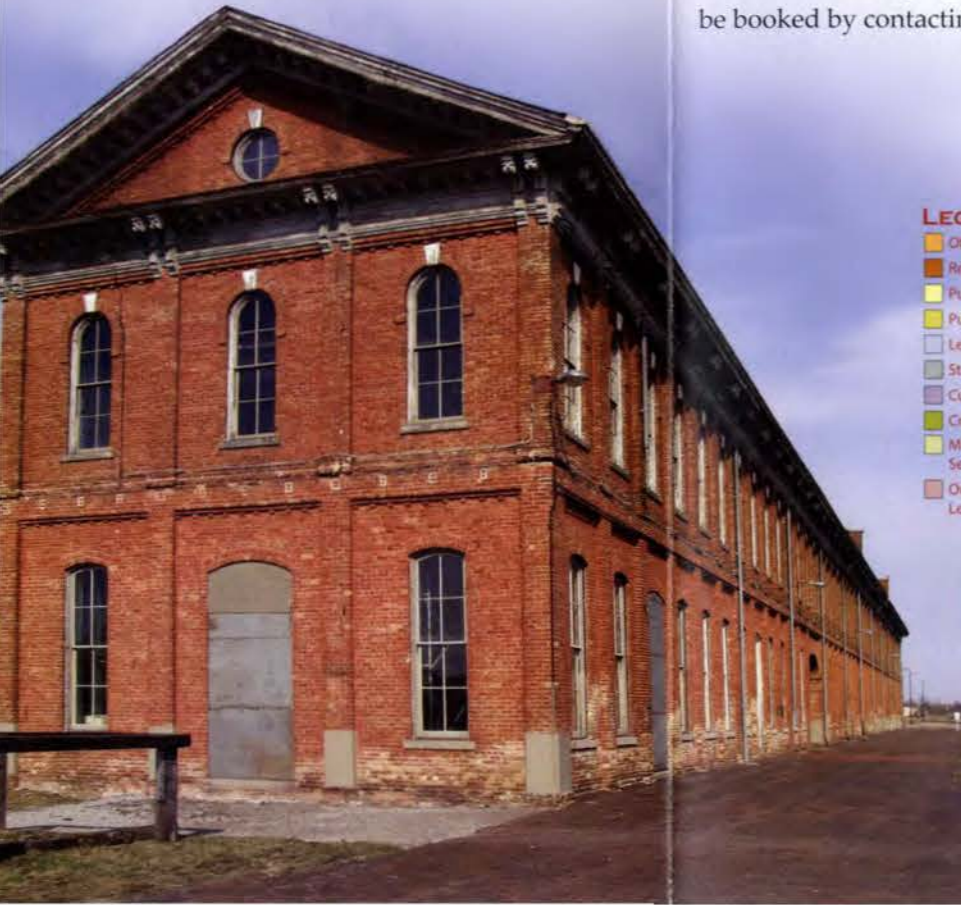
Grant Hughson.

Sally McIntyre Pat. Waito Don Lackey John McIntyre

OUR FUTURE

The Canada Southern Railway Station is a dynamic, highly visited, beautifully restored Station, functioning as the catalyst to St. Thomas' overall downtown revitalization.

Within five years, we see thousands of people coming to admire this unique historic structure restored to the majesty of this former corporate headquarters. Exterior features will be restored to their original, including the reconstruction of the canopy surrounding the building.



The station is now the centre of activity as residents and visitors take part in a range of activities.

The Canada Southern Railway Station's architecture and history provide the basis for marketing the Station as a unique, prestigious heritage property. The Station is virtually a horizontal "skyscraper", and its size and design lend the building an aura and dominating presence any city would be proud to call their own.

Membership in the organization costs \$25 per year and includes a quarterly newsletter, membership card and tax receipt. Please call us to join our exciting team. Sponsorship opportunities are available for room naming and can receive a tax receipt. Station tours, education programs and room rentals may be booked by contacting the office.



NOW LEASING!

This prestige location could be your corporate or professional headquarters. Be at the heart of the historic redevelopment of St. Thomas! More than 20 offices are available for lease, providing access to the main dining hall for special events, meetings, parking, restaurants, outdoor market and other retail. With ceilings of 16 feet, wood floors, beautifully restored windows and architectural features, state of the art connectivity and extensive views onto former railway lands, an office at the Canada Southern puts you at the centre of the historic future.



The main dining hall of this historic building provides a unique setting for a variety of events such as weddings, business meetings, private functions and parties.

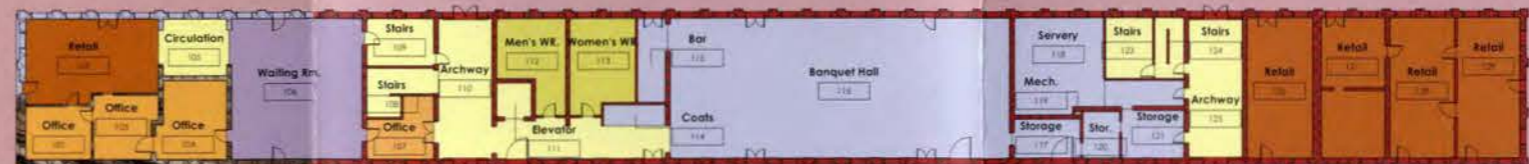
HALL RENTAL AVAILABLE

LEGEND

- Office
- Retail
- Public Circulation
- Public Services
- Leasable Space
- Storage
- Cultural Heritage
- Crawl Space
- Mechanical Services
- Outdoor Leasable Space



SECOND FLOOR



Outdoor Leasable Space

FIRST FLOOR

OUR HERITAGE

In 1873 the Canada Southern Railway Station opened, marking the beginning of an era when railways dominated the economy of St. Thomas, making the city the railway capital of Canada. This passenger and freight line provided the shortest distance between Chicago and New York and brought about immediate population growth and cosmopolitan influences. At over 360 feet long, the station was the corporate headquarters of the company, providing unequalled architectural splendour for passengers and staff. The Italianate architectural style, unusual for a Canadian station, is protected by a heritage easement with the Ontario Heritage Trust and enjoys a national designation under the Heritage Railway Stations Protection Act.

Photo courtesy of Elgin Military Museum



Photo courtesy of Elgin County Archives



Photo courtesy of Elgin County Archives

OUR MISSION

To Preserve and Honour Railway Heritage in North America and ensure the future sustainability of the Canada Southern Railway Station.

OUR VISION

Recognizing, Honouring and Preserving Our Railway Heritage.

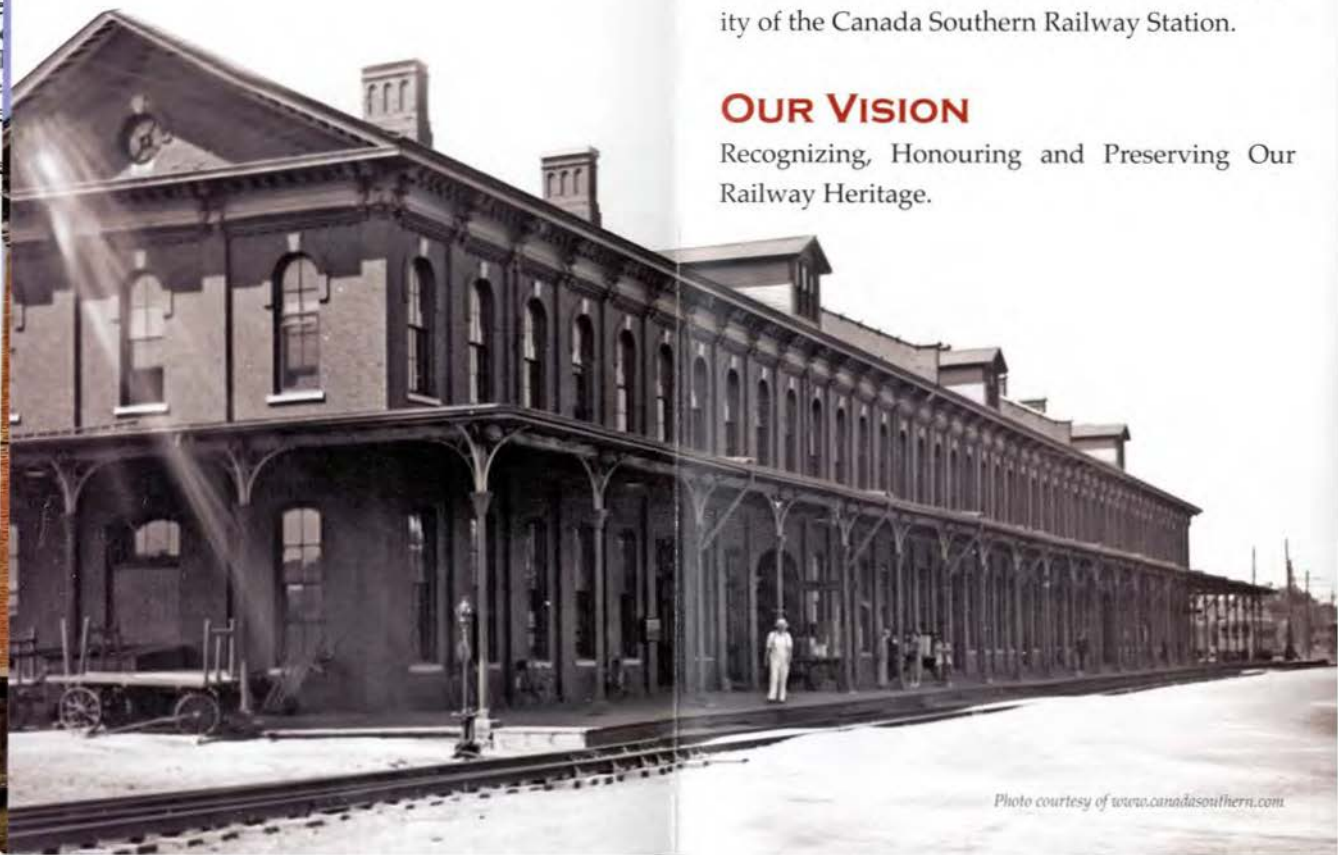


Photo courtesy of www.canadasouthern.com



Sept 26th 2008
 "Brainleys" Keep Sake
 made by Louie Lackey
 and won "Reserve
 Champion"
 at Wallacetown Fair
 Made for granddaughter
 Brainley Lackey.

Sept 26th 2008

Pat Waite & Bill
 McLanahan
 taking the door collecting
 money for Wallacetown WI
 Fair dinner



Sept 26th 2008

Kathy Minwema - checking
 the pies selection for the
 Wallacetown W.I. Fair
 Dinner.





Don & Louie Hackley. each with their display of 10 Antiques shown at the Wallace town Fair Sept 26th 2008.

Don Hackley display of 10 Antiques shown at Wallace town Fair Sept 26th 2008. Prize \$10.00.



Louie Hackley display of 10 Antiques shown at Wallace town Fair Sept 26th 2008. Prize \$10.00.

W'town WI on the road ^{April 4th 2009}

By KATHY MINNEMA

FOR THE TIMES-JOURNAL

The Wallacetown Women's Institute met at the South Dunwich Community Hall and carpooled to Springfield to the home of Wilfred and Rhonda McNaughton for their March meeting. There were four members present.

Mrs. McNaughton gave the ladies a tour through their home which was the first post office for the community.

A lunch was provided by convener Kathy

Minnema and the donation towards it went to the Aylmer District Museum.

Our speaker for the afternoon was Pat Zimmer from the Aylmer District Museum. She gave us a history of the post office which came from the Tweedsmuir History of Institute member Evelyn Hoshal.

It dates to 1854 when mail was carried by horseback. Capt. Clunas was the first postmaster.

The Kilpatrick family of Springfield ran the post office around 1877.

In 1910 postage was one cent and by 1920, it had risen to two cents.

Kathy Minnema thanked Pat Zimmer for coming and gave a donation on behalf of our Institute for the museum.

The motto for this meeting was, The Mail Must Go Through.

Roll call was a special letter you have received in

the mail.

Helen Van Brenk opened the meeting with the reading of minutes from previous meetings.

Louie Lackey gave the treasurer's report.

Our next meeting will be Thursday, April 16 at 1:30 p.m. at the home of Helen Van Brenk.

Roll call: a safety tip for you home.

Membership fees are due.

Chutneys

Varieties 250 ml

Apple	Mango
Cranberry	Peach

Pickles

Varieties 500 ml

Pickled Asparagus
Hot Pickled Asparagus
Dilled Carrots
Pickled Beets
Sweet Pickles

Gift Baskets

We can create baskets starting at \$10.00. Choose from pre-designed baskets or design your own. They can contain all jams and jellies, or add tea, coffee, shortbread, cookies, almonds, chocolates, and assorted hard candies. Sugar free baskets can also be created.

You can also supply your own items to be added to the basket, for example: wine, cheese, nuts or any business or promotional items such as pens, mugs, magnets, etc.

Feel free to contact us with any questions.

Homemade jam, the way your Mom and Grandma used to make it. Small batches, made with only quality ingredients - that has been In A Jam's way since started in 1997.

Debbie McCallum, owner & creator of In A Jam - began making jams & jellies in her own kitchen and selling them at local craft sales and farmer's markets. Soon the demand for her preserves started to grow, so, in 1999 a kitchen just for the jams was built onto the family homestead. By 2005, more room was needed. the business moved to Melbourne, Ontario - where it currently resides. All products are now made in a completely renovated location, which is inspected by the Middlesex London Health Unit.

Debbie still creates and markets the products herself. All the jams and jellies are created with top quality ingredients, and are made in small batched, open kettle fashion.

Enjoy!



Homemade Style
Jams, Jellies & Preserves

PRODUCT LIST

2007



6583 Longwoods Road
Box 89
Melbourne, ON N0L 1T0

Phone: (519) 289-JAMS (5267)
Fax: (519) 762-5865

debbiemccallum@gmail.com

Jams

Varieties 250 ml & 110 ml

Apple Pie in a Jar
Apricot
Black Cherry
Black Currant
Blackberry
Blackberry Raspberry
Blueberry
Bumbleberry
Carrot Cake
Cranberry
Cranberry Apple
Dutch Apple Pie
Elderberry
Ginger Marmalade
Gooseberry
Peach
Peach Marmalade
Pear
Pear with Ginger
Pear Pineapple Marmalade
Pumpkin
Purple Raspberry
Raspberry
Rhubarb
Saskatoonberry
Seville Marmalade
Sour Cherry
Strawberry
Strawberry Rhubarb

Jellies

Varieties 250 ml & 110 ml

Apple
Black Currant
Crabapple
Elderberry
Grape
Quince
Raspberry
Red Currant

Fruit Spreads NO SUGAR ADDED

Varieties 110 ml

Black Raspberry
Blueberry
Bumbleberry
Cherry
Peach
Raspberry
Strawberry
Strawberry Blueberry

Wine Jellies

Varieties* 190 ml & 110 ml

*SUBJECT TO AVAILABILITY

Baco Noir
Cabernet Sauvignon
Chardonnay
Concord
Merlot
Niagara
Peach Chardonnay
Strawberry Blush
Vidal

Jams WITH Attitude

Varieties 190 ml

Black Forest Cake
Cherry Almond with Amaretto
Cranberry with Rum
Peach Almond with Amaretto
Sundae In A Jar

Condiments

Varieties 250 ml

Chili Sauce (also available in 500 ml)
Vidalia Onion Relish
Salsa

Savoury Jellies

Varieties 250 ml & 110 ml

Red Pepper
Hot Red Pepper
Jalapeno Pepper
Chunky Pepper
Hot Chunky Pepper

Tequila Sunset Pepper Jelly
Horseradish Jelly (110ml jars only)

St. Thomas Times-Journal, Saturday, October 4, 2008

Oct 2nd 2008

Wallacetown WI women find themselves In A Jam

BY KATHY MINNEMA
FOR THE TIMES-JOURNAL

WALLACETOWN — The September meeting of the Wallacetown Women's Institute had 10 members and two guests present.

They met at the South Dunwich Community Hall and car-pooled to Melbourne, Ont., where they visited, In A Jam, owned and created by Debbie McCallum.

Ms. McCallum gave us a tour of her business and explained how she purchases, produces and markets close to 100 different types of jams, jellies, pickles and gift baskets, all of various sizes.

She started her business

in her home until she needed more space, then moved to Melbourne.

Every item is homemade the old-fashioned way in small batches, in the open-kettle fashion.

Her gift baskets can be items from her store or you can supply your own items to help promote your business.

Darlene Ford thanked Ms. McCallum for sharing her time. They both supplied a light lunch of scones and jams, with a drink for the ladies.

President Helen Van Brenk opened the meeting and reports were given. She had attended the Tweedsmuir Workshop in Kirkton, Ont., in August.

Sally McIntyre gave an

update on the Bobier Villa activities.

Joan McLandress and Joan Johnston reported on the Elgin Manor Tuck Shop.

A coming event is the London Area Convention to be held at the Keystone Complex in Shedden on Oct. 7.

Meeting conveners were Darlene Ford and Joan McLandress.

Joan McLandress read the motto: A hobby will add interest and pleasure to your life and broaden your knowledge.

Roll call was: Laughter is the best medicine.



In A Jam
Homemade Style
Jams, Jellies & Preserves
Gift Baskets

Debbie McCallum

6583 Longwoods Road
Box 89
Melbourne, ON N0L 1T0

Phone: (519) 289-JAMS(5267)
Fax: (519) 762-5865

inajam@yahoo.ca



Back Row - 1, Sally McIntyre², Kay Waite³, Joan McLandress⁴, Kay Hill⁵.
6, Donis Barber, 7, Louise Lackey⁸, Joan Johnson, 9, Debbie McCallum.

Front Row -
1, Kathy Minnema², Helen VAN Brenk³, DARLENE FORD.

THE MAIL MUST GO THROUGH

March 4th 2009

The mail must go through, is a very old saying that still applies today. We all depend on the mail to get to its destination as quickly as possible. In some cases it can take time but on the other hand it can be incredibly fast. I have mailed a card to family here in Springfield and it has been recieved the next day. Now that's amazing. I can send a letter to Holland and it will be recieved in 7 to 10 days.

We take alot for granted, don't always appreciate what services we are receiving until they are not there. Since 1965 there have been 19 major postal strikes. Introducing changes, many issues have been delt with to protect the workers, security has become a very big item everywhere. Did you know the first post office was opened in 1755 by Benjamin Franklin in Halifax, Nova Scotia.

Today we anticipate the arrival of the mail each day. Watching to see if their on time. Looking for a special envelope for a birthday, party and wedding invitations, recognizing the handwriting on the envelope puts smiles on our faces. But also those dreaded bills that seem to come on schedule each month. Some days the bills out number everything else. Thats all part of life and we can always complain to make us feel better, but in the end we still depend on that link from the post office to keep us going.

Whether you live in the big cities, towns, villages or in the rural areas you will receive your mail. Sometimes its amazing how, the address could be incomplete, initials instead of names, names not always spelled correctly. But if you have a name and a city or a postal code it will miraculously arrive. The workers inside of the post office must be talented to be able to figure out the destination of each letter and to know all the people in their area and were they live.

The next time you walk into a post office give the worker behind that counter a big thank you. **BECAUSE OF THEM THE MAIL DOES GO THROUGH.**

BY KATHY MINNEMA.

Wallacetown Women's Institute holds January euchre party

Jan 22nd 2008

-submitted by Kathy Minnema

The Wallacetown W.I. met for a January gathering at the South Dunwich Community Hall with eight members present and 19 guests from the community.

A pot luck lunch was held at noon. Louie Lackey lead us in singing grace before everyone enjoyed a bountiful lunch.

A progressive euchre card party followed the lunch organized by convenors Kay Waite and Doris Barber. There were five full tables and one over.

Yellow Card Winners: High Hand - Casper Van Den Broek. Lone Hands - Doris Barber. 2nd High Hand - Beverly Small.

White Card Winners: High Hand - Jean

Van Nuland. Lone Hands - Leola Lackey. 2nd High Hand - Marion Page.

Door prize winners: Marion Ashmore, Alice Plain, Maxine Campbell, Shirley Longhurst, Helen Small, Ruth Ruger.

February meeting will be held at the W.I. Winter Picnic on Feb. 18 at the Talbotville United Church at noon. Bring your own dishes and your favourite dish to share.

March meeting March 5. Meet at the South Dunwich Community Hall at 10:30 a.m. and carpool to Springfield at the home of Wilfred and Rhonda McNaughton.

Convenor Kathy Minema, Lunch \$8. Roll Call: Tell us about a special letter you have received in the mail. Speaker Pat Zimmer from the Aylmer District Museum.

Ruth Ruger

JOE VAN NULAND



KAY WAITE

RUBY McJUGAN

RUBY McJUGAN



KAY WAITE

JOE VAN NULAND

Burns' poetry illustrated by quilts

Jan 27th 2009

BY TIMES-JOURNAL STAFF
Elgin County Museum
partied Sunday like it was
1759.

The museum celebrated the birth of Robbie Burns with a 90-minute Burns Day program, and the donation of three Burns-themed quilts by St. Thomas native Marion Tews.

Now a resident of London, Ont., she is the great-great-granddaughter of Burns' best friend, Gavin Hamilton.

"It's a great opportunity to put these remarkable quilts up," museum Curator Mike Baker said.

Completed about a decade ago and donated 12 months ago to the museum, the quilts illustrate verses from Burns' beloved poetry.

"She has a nice way of tackling history, visually. She also works in her own family connection."

Burns dedicated his first book of poetry to Hamilton.

Tews also donated a fourth quilt also on display Sunday: a 1981 St. Thomas centennial quilt completed by her former mother-in-law, Helen Thomson, picturing landmark buildings in the community.

Tews' quilts are to be exhibited through Feb. 28. A long-case clock owned by Hamilton and now the possession of her brother,

also Gavin, a London, Ont. radiologist, is at the museum for two weeks.

More than 100 people jammed the museum on the fourth floor of the Elgin County Administration Building for a program which included readings of Burns' poetry by Glasgow-born museum volunteer Allison St. John, and an appreciation of the Bard of Scotland by St. Thomas resident Ian Hunter, a retired UWO law professor and a Burns scholar.

Refreshments included haggis tarts.



Marion Tews, left, and Elgin County Museum curator Mike Baker look over one of three Burns-themed quilts she completed and donated to the museum. (T-J photo by Eric Bunnell)



MIKE BAKER

24/01/2009



24/01/2009

